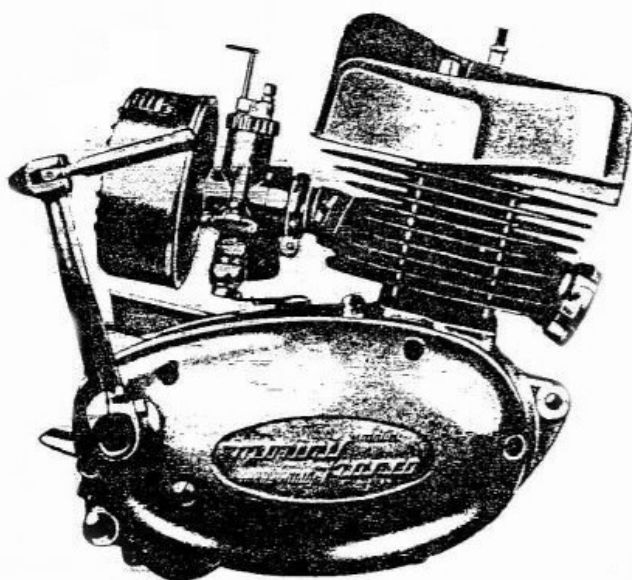


**ILLUSTRATED PARTS
BREAKDOWN FOR:
100cc MORINI
MODEL IOI ENGINE ASSEMBLY**



INTRODUCTION

1-1. SCOPE OF THIS MANUAL

1-1.1 This illustrated parts book (IPB) applies to the 100 cc Morini Model 101 Engine Assembly.

1-1.2 The illustrated parts book is the master parts catalog for parts contained within the Model 101 Engine Assembly and should be used by Dealers and Distributors for requisitioning (ordering), storing, issuing and identifying parts.

1-2. DESCRIPTION — The assembly parts breakdown tables consist of a listing of engine assemblies, subassemblies, major parts, and detailed parts. Items that are made from raw stock such as lengths of wire, insulating material, grease, sealants and paint are not included in the parts breakdown.

1-2.2 FIGURE AND INDEX NUMBER COLUMN — In this column, the digits preceding the hyphen refer to the figure in the parts breakdown on which a part or assembly is illustrated, the digits following the hyphen are the index numbers of the parts. Parts shown for reference purposes only are not assigned index numbers. The index numbers are numerically arranged in the listing and are used mainly to assist in locating a part in the list.

1-2.3 UNIT PER ASSEMBLY COLUMN — This column lists the quantity of assemblies, subassemblies or parts required of a given part for its immediately preceding assembly. The quantities

specified, therefore are not necessarily the total used per motorcycle. The letters "AR" denote that the selection of parts should be made "As required".

1-2.4 PART NUMBER COLUMN — In this column the part numbers of assemblies, subassemblies, and component parts are listed. Part numbers are used exclusively to identify parts.

1-2.5 DESCRIPTION COLUMN — In this column the manufacturers description for each assembly, subassembly, or part is listed. This description should be used with the part number when ordering parts.

1-2.6 USABLE ON CODE COLUMN — This column shows the usability of parts on different engine models. If no letter appears in this column the part may be used on all models. The codes used in this handbook are as follows:

- A — Standard Piston Assembly
- B — Oversize Piston Assembly

1-2.7 DEALER/DISTRIBUTOR UNIT COST COLUMN — This column is provided so that distributors and dealers may write in their unit price information for each type of part. This will assist dealers and distributors in more easily determining costs when preparing parts orders. This column can also be used to record suggested retail prices. It is recommended that one parts book be used for parts ordering and a second book be used for suggested retail pricing.

TABLE -1. MODEL 101 ENGINE ASSEMBLY PARTS TABLE

Fig. & Index No.	Part Number	Units/ Assy	Description	Usable On Code	Dist/Dealer Cost Data
1-1	26-5018	1	Clutch Case-Half		
-2	26-5019	1	Flywheel Case-Half		
-3	12-4023	1	Flywheel Cover		
-4	12-4024	1	Clutch Cover		
-5	10-8004	1	Connection, Friction Wire Register		
-6	25-5004	4	Cylinder Heat Holding Down Stud		
-7	12-7028	4	Stud Bolt M8		
-8	25-4023	4	Washer for Stud \varnothing 8.2 x 14 x 1.5		
-9	29-6001	1	T.C. Screw, Oil Level		
-10	16-4006	1	Gasket, Oil Level Screw		
-11	16-7001	3	Crankcase Dowel		
-12	27-3003	1	Cap, Gear Oil Supply		
-13	29-4132	1	Oil Drain Cap		
-14	16-4008	1	Gasket, Oil Drain Cap		
-15	29-6015	3	T.C. Screw M4, Stator Clamp		
-16	16-3002	1	Chock Rubber		
-17	16-4065	1	Gasket, Crankcase Cover		
-18	16-4066	1	Crankcase Gasket		
-19	16-4073	1	Gasket, Connection For Friction Wire Register		
20	13-1001	1	Nut, Friction Register Connection		
-21	25-4017	1	Grower Washer \varnothing 6 for Nut		
-22	12-2009	1	Cylinder		
-23	27-5008	1	Cylinder Head		
-24	10-0022	1	Shaft, Engine Assembly		
-	26-3031	1	Semi-shaft, Flywheel Magneto Side		
-	26-3013	1	Semi-shaft, Transmission Side		
-	23-1010	1	Pin, Flywheel Coupling		
-	11-0009	1	Complete Rod With Cage & Pin		
-	16-4067	1	Gasket, Oil Supply Plug		
-	11-1004	1	Bare Rod		
-	11-5011	1	Bush for Rod's Eye		
-	16-1004	1	Cage, Durkopp Roller 22.9 x 28.9 x 13.7		
-33	23-2510	1	Motor Pinion		
-34	13-1002	1	Nut, Motor Pinion Clamp		
35	25-4002	1	Nut Washer \varnothing 12		
-36	12-7089	1	Wrench, Motor Pinion		
-37	23-3509	1	Piston \varnothing 50 Assy.	A	
-	23-3510	1	Piston \varnothing 50 Oversize (2-4-6-8/10) Assy.	B	
-38	26-8018	1	Piston Pin 14 x 41.5		
-39	10-4005	2	Piston Pin Arresting Rings		
-40	26-1011	1	1st Piston Ring A L \varnothing 50 x 2.5	A	
-41	26-1012	1	2nd Piston Ring \varnothing 50 x 2.5	A	
-	26-1013	1	1st Piston Ring A L Oversize (2-4-6-8/10)	B	
-	26-1014	1	2nd Piston Ring Oversize (2-4-6-8/10)	B	
-42	13-3002	1	Nut, Flywheel Magneto Clamp		
-43	12-7005	1	Wrench, Flywheel Magneto		

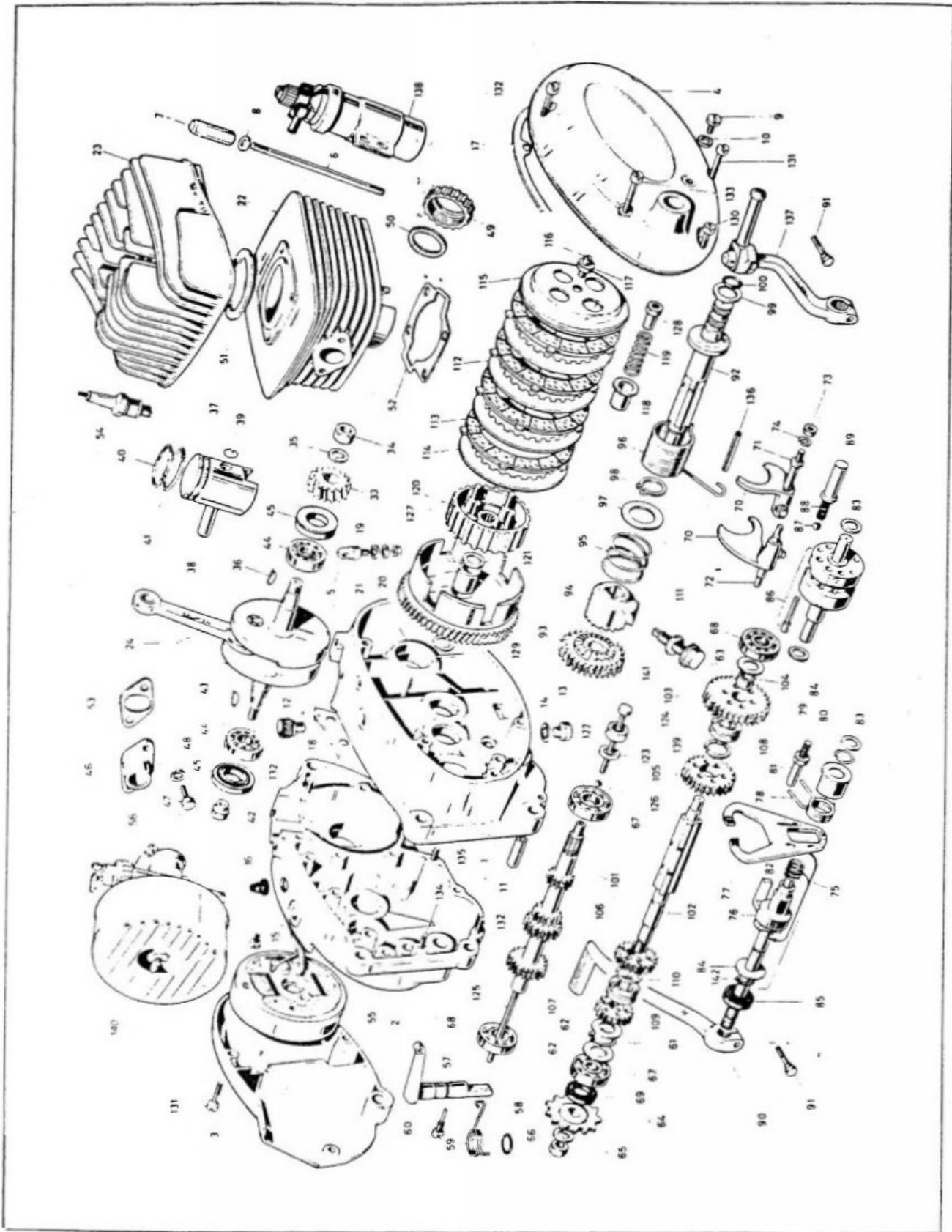


Figure -1. Model 101 Engine Assembly, Exploded View

TABLE -1. MODEL 101 ENGINE ASSEMBLY PARTS TABLE (Cont'd.)

Fig. & Index No.	Part Number	Units/ Assy	Description	Usable On Code	Dist/Dealer Cost Data
1-44	12-6001	2	Crankshaft Bearings 17 x 40 x 12		
-45	10-6001	2	Junk Ring 17 x 35 x 8		
-46	25-1006	1	Carburetor Connector		
-47	29-4088	2	Screw, Connector Clamp		
-48	25-4017	2	Washer, Connector Screw		
-49	16-2003	1	Exhaust Pipe Ring Nut		
-50	16-4038	1	Gasket, Exhaust Pipe Nut		
-51	16-4039	1	Gasket, Cylinder Head		
-52	16-4040	1	Gasket, Crankcase Cylinder		
-53	16-4041	1	Gasket, Carburetor Connector		
-54	12-7075	1	Plug 240		
-55	29-0022	1	Flywheel Magneto Without B.A.T.E. (ASL 233S)		
-56	12-0052	1	Carburetor UB 22 S2 (without filter F20)		
-57	19-1012	1	Clutch Control Lever		
-	23-1033	1	Pin, Clutch Control Lever		
-58	10-7003	1	Oil Seal Ring for Clutch Lever		
-59	20-1023	1	Return Spring, Clutch Lever		
-60	29-6003	1	Screw, Clutch Control Lever		
-61	10-5001	1	Retaining Ring, Shaft Sec. 4th vel. 15 x 1		
-62	25-4005	2	Washer, Gear Adjustment Ø 15		
-63	25-4040	1	Washer, Gear Adjustment Ø 13		
-64	23-2511	1	Driving Gear 1/2 x 6/16 x 13		
-65	13-1002	1	Nut, Driving Gear Clamp		
-66	25-4002	1	Nut Washer		
-67	12-6002	2	Bearing 15 x 35 x 11 02A		
-68	12-6003	2	Bearing 12 x 32 x 10 03A		
-69	10-6003	1	Junk Ring, Speed Change 15 x 24 x 7		
-70	15-4008	2	Shifting Fork		
-71	10-7508	1	Fixed Fork Slide Bar 1st & 2nd vel.		
-72	10-7509	1	Fork Slide Bar 3rd & 4th vel.		
-73	13-1005	1	Nut, Fork Slide Bar Clamp 1st & 2nd		
-74	25-4022	1	Grower Washer for Nut		
-75	26-0003	1	Complete Selector Unit		
-76	10-1032	1	Shaft, Gear With Snug		
-77	15-4002	1	Fork, Traverse Cam		
-78	20-1008	1	Return Spring, Automatic Snug		
-79	12-7010	1	Spring Cover		
-80	10-4008	1	Ring, Spring Cover		
-81	23-1004	1	Stop Pin, Spring Automatic Snug		
-82	20-1009	1	Fork-Holding Spring, Traverse Cam		
-83	25-4009	2	Washer, Gear Adjustment Ø 10		
-84	25-4026	2	Washer, Gear Adjustment Ø 12		
-85	10-6005	1	Oil Junk Ring 12 x 22 x 7		
-86	10-1009	1	Camshaft, Preselector with Pintles		
-87	26-8006	1	Pitch-Indicating Ball		
-88	20-1010	1	Spring, Pitch-Indicating Ball		



TABLE -1. MODEL 101 ENGINE ASSEMBLY PARTS TABLE (Cont'd.)

Fig. & Index No.	Part Number	Units/ Assy	Description	Usable On Code	Dist/Dealer Cost Data
1-89	11-8001	1	Envelope, Pitch-Indicating Ball		
-90	19-1021	1	Gear Control Lever with Screw		
-91	29-4115	2	Screw, Gear Control Lever and Starter		
-92	10-1033	1	Starter Shaft		
-93	18-1017	1	Gear, Starter Z 21		
-94	18-4010	1	Sliding Clutch, Starter		
-95	20-1011	1	Spring for Sliding Clutch		
-96	20-1048	1	Spring, Starter		
-97	13-5014	1	Disc for Starter Spring		
-98	10-5002	1	Retaining Ring, Starter Shaft \varnothing 18		
-99	25-4007	1	Gear Adjustment Washer for Starter Shaft		
-100	10-7003	1	Ring, Starter Shaft		
-	10-5001	1	Retaining Ring, Shaft \varnothing 15 E Starter		
-	12-4006	1	Complete Gear		
-101	10-1043	1	Primary Gear		
-102	10-1044	1	Secondary Gear		
-103	18-1029	1	Gear 1st vel. on the Secondary		
-104	11-5012	1	Gear Bush. 1st vel.		
-105	18-1030	1	Gear 2nd vel. on the Secondary		
-106	18-1031	1	Gear 3rd vel. on the Secondary		
-107	18-1032	1	Gear 4th vel. on the Secondary		
-108	18-4014	1	Sliding Clutch, 1st & 2nd vel.		
-109	18-4013	1	Sliding Clutch, 3rd & 4th vel.		
-110	10-4003	1	Special Retaining Ring for 2nd & 3rd vel. sec.		
-111	29-6008	1	Stop Screw, Starter Sliding Clutch		
-	27-0020	1	Complete Primary Transmission		
-	12-7088	1	Clutch Gear		
-	12-7063	1	Clutch Bell		
-	25-7001	6	Bell Rivet		
-112	13-5017	3	Steel Clutch Disk		
-113	13-5018	4	Packed Clutch Disk		
-114	13-5019	1	One Side Packed Clutch Disk		
-115	12-7064	1	Clutch Terminal Cap		
-116	29-6004	1	Screw, Friction Register		
-117	13-3003	1	Nut, Friction Register Screw		
-118	26-8012	4	Spring-Holding Cap		
-119	20-1041	4	Clutch Spring		
-120	27-1006	1	Clutch Drum		
-121	25-4005	2	Washer, Clutch Shimming		
-122	13-1002	1	Drum Clamp Nut		
-123	25-4024	1	Nut-fastening Washer		
-124	26-8003	1	Disk-Pusher		
-125	10-7514	1	Clutch Rod		
-126	26-8004	1	Ball, Clutch Rod		
-127	11-5018	1	Steel Distance Bush		
-	12-7065	4	Clutch Stud		



TABLE -1. MODEL 101 ENGINE ASSEMBLY PARTS TABLE (Cont'd.)

Fig. & Index No.	Part Number	Units/ Assy	Description	Usable On Code	Dist/Dealer Cost Data
1-128	13-3019	4	Spring Stop Nut		
-129	25-4049	1	Gear Adjustment Washer, Crown Clutch		
-130	29-1165	2	T.C. Screw M6 x 25		
-131	29-1167	5	T.C. Screw M6 x 30		
-132	29-1168	11	T.C. Screw M6 x 35		
-133	29-1169	1	T.C. Screw M6 x 40		
-134	29-1172	2	T.C. Screw M6 x 55		
-135	29-1173	2	T.C. Screw M6 x 60		
-136	26-3045	1	Spring Pin \varnothing 5 x 34 DIN 1481		
-137	19-1022	1	Articulated Starter Lever		
-138	ASL-V19	1	A.T. Outer Coil R8		
-139	10-4003	2	External Retaining Ring, Secondary Shaft		
-140	15-0001	1	Strainer (100029) Air Filter		
-141	16-4009	1	Gasket, Stop Screw		
-142	10-5006	1	Retaining Ring, Shaft \varnothing 12		

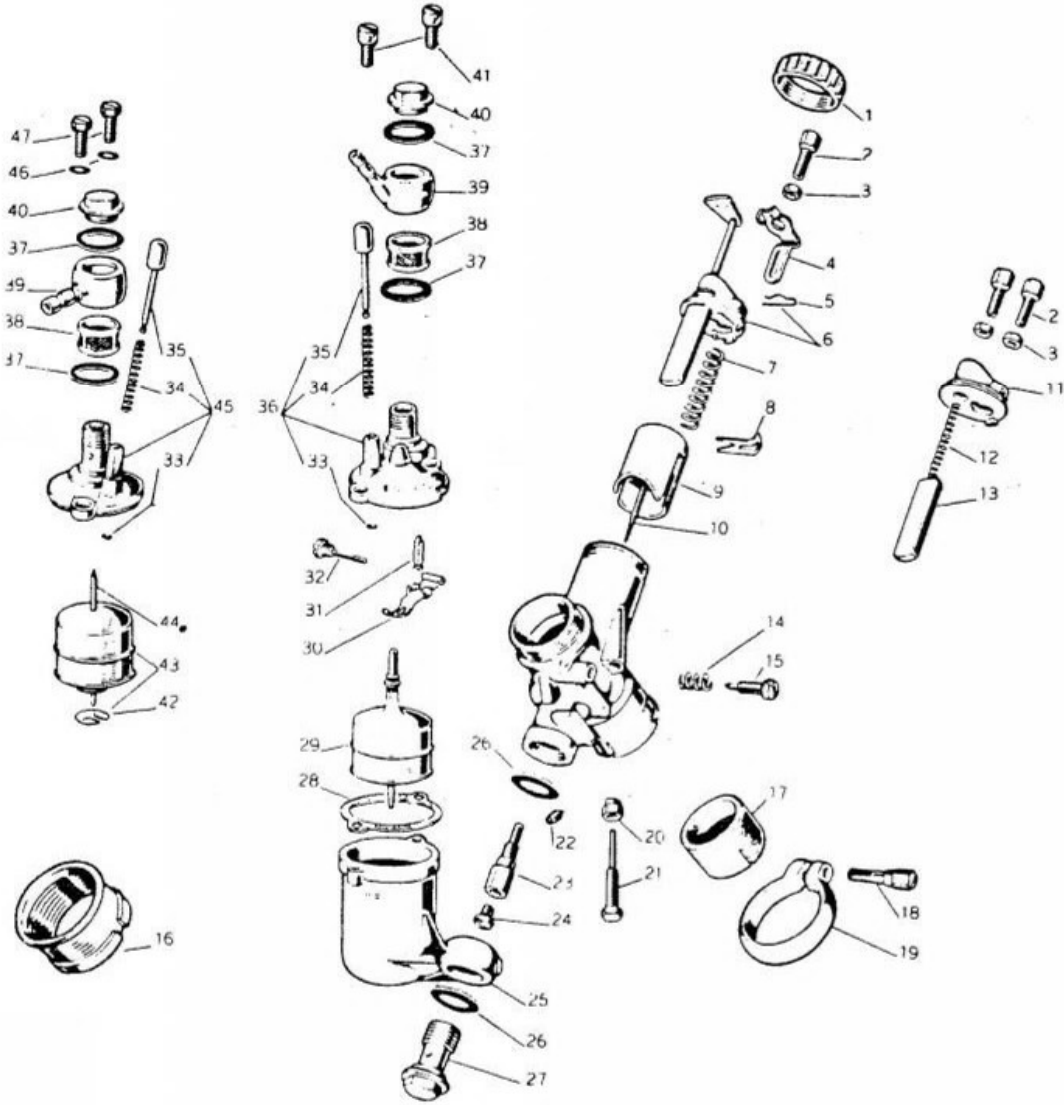


Figure 2 Dell 'Orto Carburetor, Exploded View

TABLE 2 DELL 'ORTO CARBURETOR PARTS TABLE

Fig. & Index No.	Part Number	Units/ Ascy	Description	Usable On Code	Dist/Dealer Cost Data
2-1	2324-60	1	Ring		
-2	1104-37	1	Screw		
-3	1691-27	1	Nut		
-4	5670-21	1	Tweezers		
-5	3570-21	1	Tweezers		
-6	2330-53	1	Cover		
-7	2372-61	1	Spring		
-8	1407-21	1	Needle circlip		
-9	4361X64	1	Throttle valve		
-10	2343X08	1	Needle		
-11	2329-53	1	Cover		
-12	1093-61	1	Spring		
-13	2325-64	1	Choke		
-14	1411-61	1	Spring		
-15	2115-37	1	Screw		
-16	4224-82	1	Air Filter Adaptor Ring		
-17	6976-62	2	Seal ring		
-18	1111-36	1	Screw		
-19	1723-50	1	Ring		
-20	1096-27	1	Nut		
-21	1095-37	1	Screw		
-22	1488X02	1	Idling jet		
-23	1485X28	1	Jet holder		
-24	1486X02	1	Main jet		
-25	1866-96	1	Float chamber		
-26	1382-30	1	Gasket		
-27	2086-34	1	Plug		
-28	1414-30	1	Gasket		
-29	3076X80	1	Float		
-30	3073-26	1	Float valve holder		
-31	2838-05	1	Float valve		
-32	2835-22	1	Adjustment screw		
-33	1493-21	1	Ring		
-34	1410-61	1	Spring		
-35	1492-25	1	Mixer		
-36	2850-54	1	Cover Assembly		
-37	1416-30	2	Gasket		
-38	1419-29	1	Filter		
-39	2706-38	2	Pipe		
-40	1494-34	1	Pipe plug		
-41	5774-36	2	Screw		
-42	1452-21	1	Ring		
-43	2390X80	2	Complete float		
-44	1607X05	1	Pin		
-45	1584-54	1	Cover Assembly		
-46	5010-23	2	Washer		
-47	1491-36	2	Screw		



TABLE 3 FLYWHEEL ASSEMBLY, PARTS TABLE

Fig. & Index No.	Part Number	Units/ Assy	Description	Usable On Code	Dist/Dealer Cost Data
Ref	ASL 206	1	Flywheel 30 W 6V		
Ref	ASL 206/SC	1	Flywheel complete with stop cable		
3-1	ASL 6/1	1	Flywheel rotor		
-2	ASL 6/2	1	Plate for rotor		
-3	ASL 6/2B	1	Complete plate for rotor		
-4	ASL 6/4	1	Inductor group		
-5	ASL 6/5	1	Felt		
-6	ASL 6/6	1	Complete rotor		
-7	ASL 6/10	1	Condenser		
-8	ASL 6/11	2	Screw		
-9	ASL 6/12	1	Washer		
-10	ASL 6/14	4	Washer		
-11	ASL 6/15	4	Screw		
-12	ASL 6/18	1	Ignition coil		
-13	ASL 6/18B	1	Ignition coil with stop winding		
-14	ASL 6/19	1	Ignition coil A.T., outer		

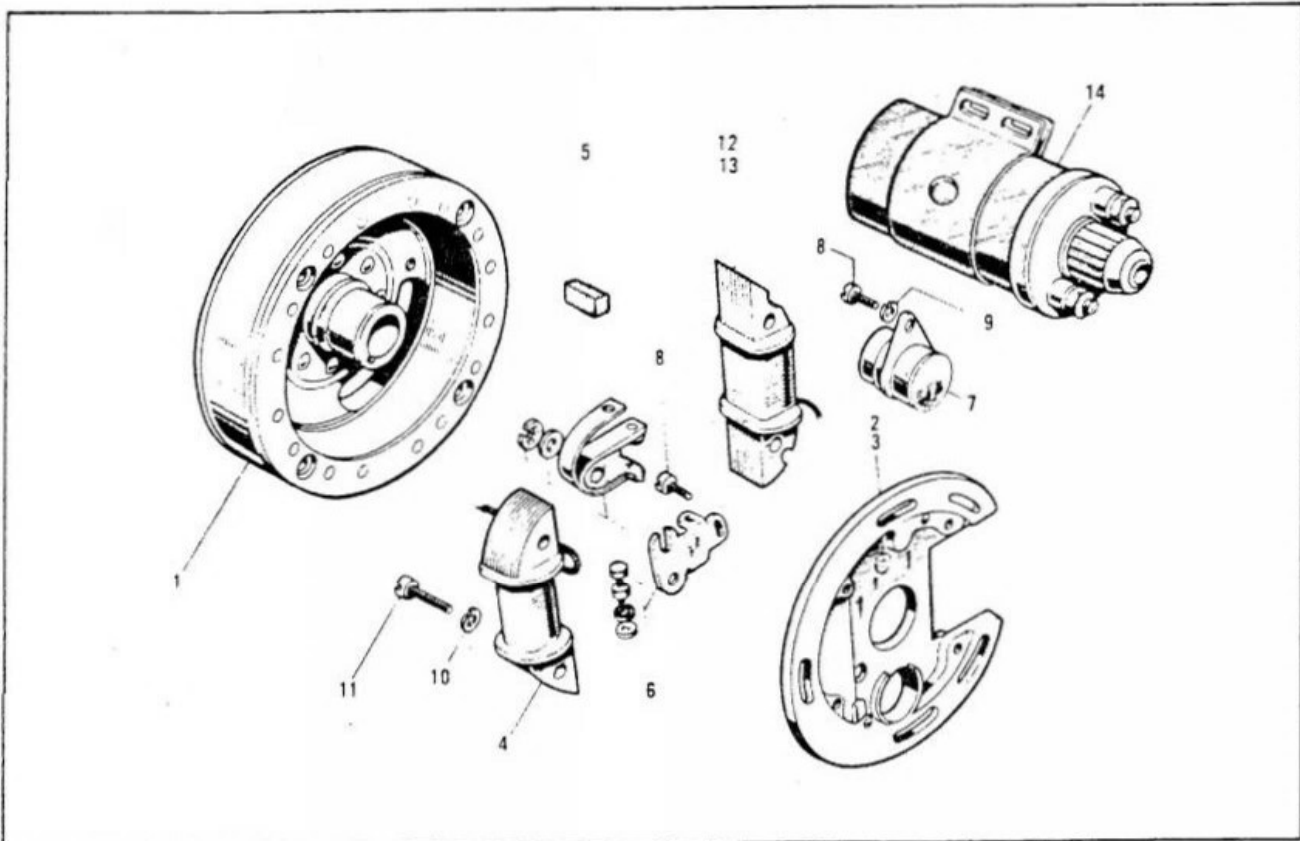


Figure 3 Flywheel Assembly, Exploded View



TABLE 4 FUEL FILTER F20 PARTS TABLE

Fig. & Index No.	Part Number	Units/ Assy	Description	Usable On Code	Dist/Dealer Cost Data
4-1	1187-21	1	Cotter key		
-2	1829-27	1	Wing nut		
-3	1186-85	1	Cover		
-4	1197-27	1	Bolt		
-5	1181-36	1	Screw		
-6	1182-83	1	Screen		
-7	1201-85	1	Strainer		
-8	1184-66	1	Retainer, inner		
-9	1185-66	1	Retainer, outer		

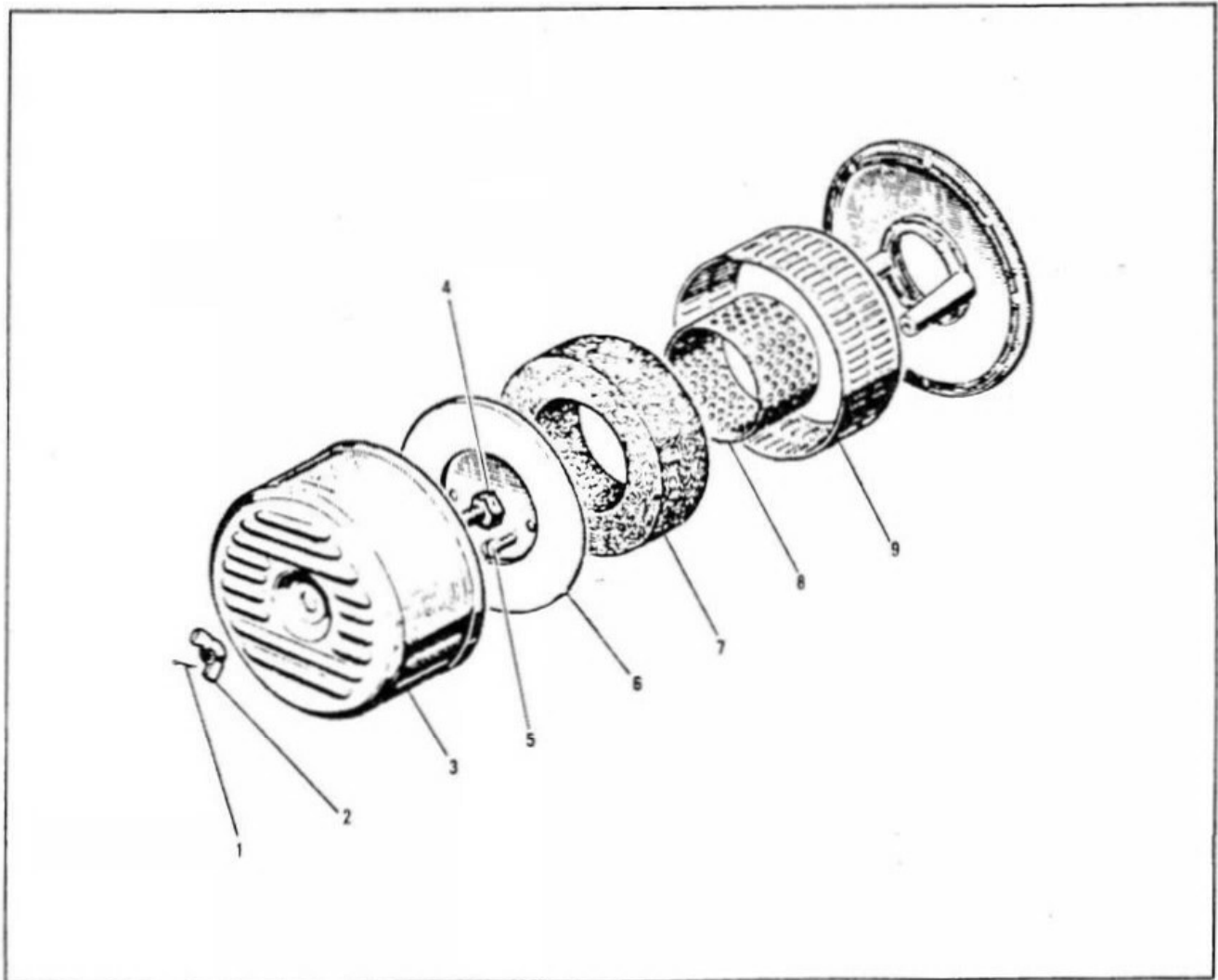


Figure 4 Fuel Filter F20, Exploded View



FABBRICA VEICOLI RICREATIVI
RECREATIONAL VEHICLES

Sede : Via Statale - 22061 BARZAGO (Como) Italy - Telefoni (031) 860.281 / 282 / 283